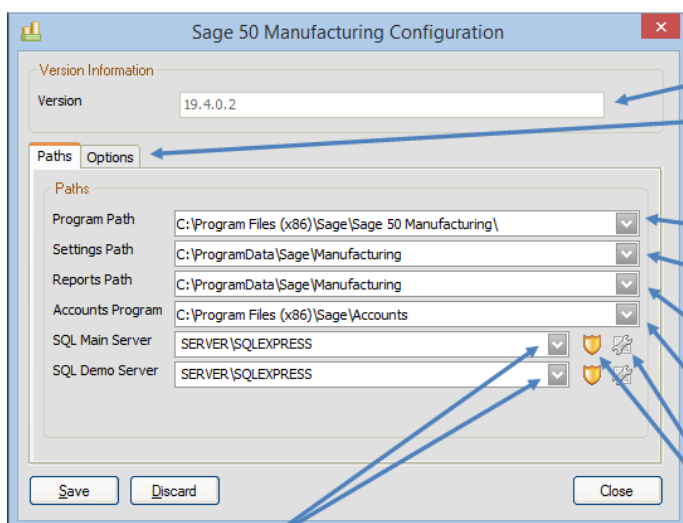


Sage 50 Manufacturing Configuration Database

Sage 50

The SageConfiguration.exe file is held within the Program Files location and is created when the program is installed. It is populated with the details that are entered into the wizard when the program is ran for the first time. An item is also created within the traditional Start Menu under All Programs > Sage > Tools > Sage 50 Manufacturing > Configuration. On Windows 8 and 8.1 it can be found under Apps > Sage Tools > Configuration.



Version number of Sage 50 Manufacturing

The Options Tab
This gives a range of different options however it is rare that any of them will ever need to be changed


Paths to:

- The Sage 50 Manufacturing Program**
- The Settings directory**
This holds things like List/Toolbar configurations and schema files (covered later in this document)
- The path to the Manufacturing Reports**
The reports can be held locally or on a central location, it is possible to over-ride the location of individual layouts within Sage 50 Manufacturing > Tools > Options > reports
- The Sage 50 Accounts Program**
This is used by the system to determine the location of the Accounts COMPANY file (it is not held here)

SQL Server Security & Properties forms

The SQL Main and Demo Server instance
This is used to populate the connection.udl file if one does not already exist

Clicking on the shield icon next to SQL main server (or SQL Demo Server) opens the SQL Security window.



SQL Server Security

It is recommended that SQL is installed in mixed mode authentication which makes it possible to connect to SQL using a specific user name as opposed to relying on the windows users credentials

It is possible to test if the connection details are valid (further information on connection errors is included later in this document)

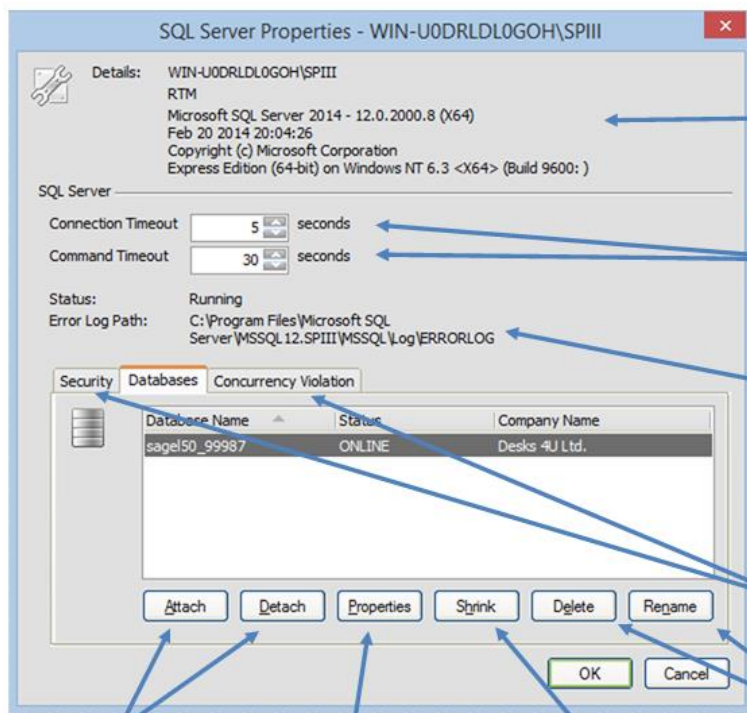
It is possible to extract the login information held within Configuration from the following Windows Registry Key

[HKEY_CURRENT_USER\Software\Sage\Line 50 Manufacturing\Company\Sq*SQL INSTANCE NAME*]

Clicking on the spanner opens the SQL Server Properties.

Note: This will not work on a client machine or if SQL Server is version 2008 or later, unless SQL Server 2005 Backwards Compatibility components are installed.





SQL Server Version Details

SQL Server Timeout settings

This can be useful when troubleshooting timeout errors. Setting to 0 means that the system won't timeout

SQL Server Status

Is useful indication of whether the SQL service is running and if there is a problem a indication of where the SQL error log is located (this will be the path as on the SQL Server)

The Security Tab

This replicates the behaviour of SQL Server Security window

Concurrency Violation

This is not currently used

Attach\Detach

Allow Databases to be attach to or detached from the SQL instance

Properties

Gives information and additional setting for the database select but this is rarely used

Shrink

It is possible to reduce the size of the database by removing unused pages. For instances of SQL it is also possible to truncate the SQL transaction log

Delete & Rename

Only to be used with extreme caution and on the advice of Technical Support