

Sage 50 Manufacturing Connection.UDL

Sage 50

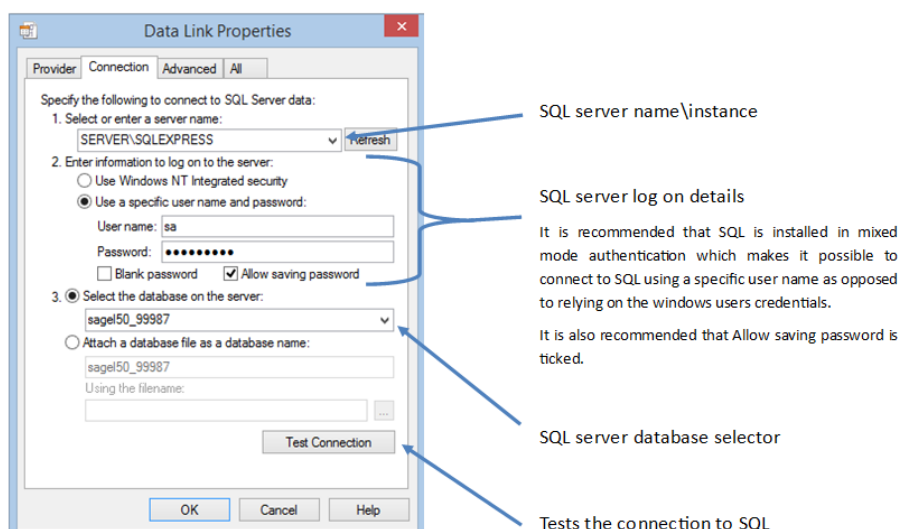
The Connection.UDL file is the file extension for Universal Data Link. You can use the Data Link Properties dialog box to save connection information to a range of different database formats. The Connection.UDL file is created the first time that you connect to a Sage 50 Accounts company using Sage 50 Manufacturing. The system uses the information entered into the Manufacturing Start Up Wizard or the information held in Configuration (Start > All Programs > Sage Tools) if connecting to a new company or an existing system. When you first select the company you are presented with the following screen.



Clicking Yes to this message creates the Manufacturing database in SQL, the Manufacturing folder in ACCDATA and the Connection.UDL file.

The file is held in the Manufacturing folder, which can be found in the Sage 50 Accounts data folder called ACCDATA. The file name may be displayed as 'connection' and no .UDL extension if the PC is configured to hide extensions for known file types.

For an existing Connection.UDL file created by Sage 50 Manufacturing, the only relevant information is stored in the connection tab. The connection tab is populated either with the details provided during the setup wizard on newly installed systems or the details held in the configuration utility when setting up subsequent company datasets.



There are several reasons why the Connection.UDL may fail to connect although when this occurs, it is usually due to one of the following errors:

[DBNETLIB][Connection Open (Connect()).]SQL Server does not exist or access denied

The cause of this message includes but is not limited to the following:

- ❖ Invalid database name
- ❖ SQL set to 'Use Windows NT Integrated' security and user has insufficient privileges to access the SQL Server

Login Failed for User 'sa'

This error occurs when the user has entered an incorrect password or no password in the Configuration Database.