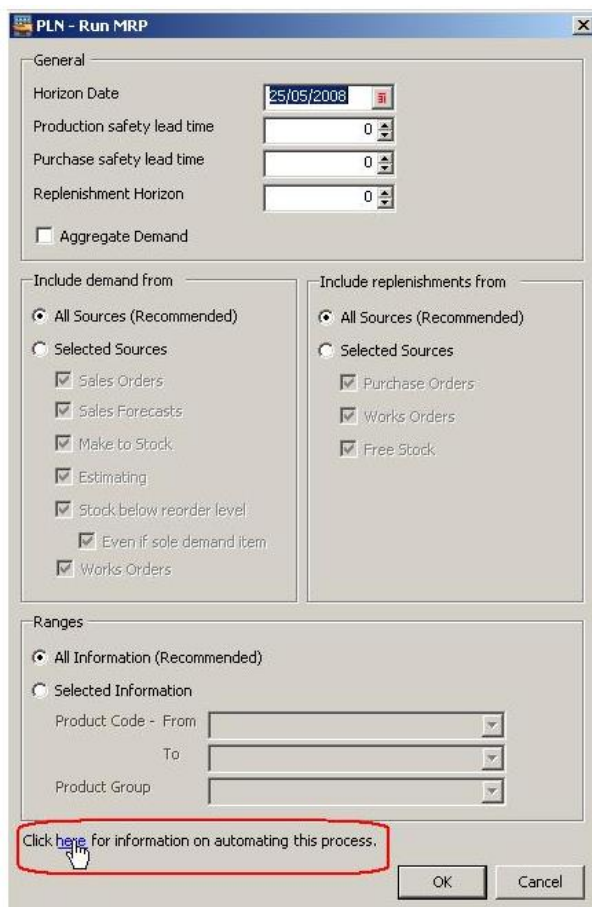


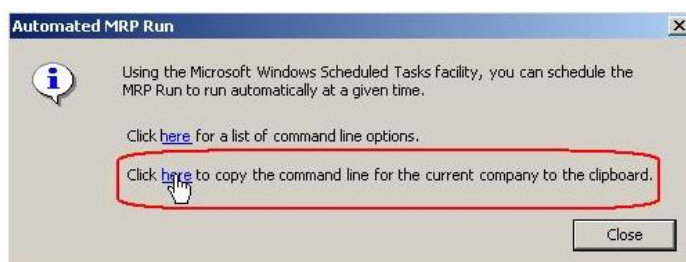
## Setting Up an Automated MRP in Sage 200

### Sage 200 Extra

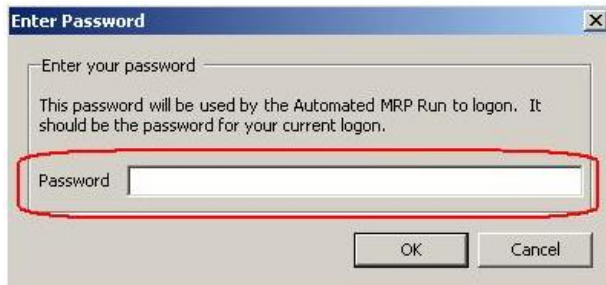
Using the Microsoft Windows Scheduled Tasks facility, you can schedule the MRP Run to run automatically. Within Sage 200, Planning, MRP select run MRP.



Click on 'Click here for information on automating this process'



Then 'Click here to copy the command line for the current company to the clipboard'



Enter the password for your current logon.

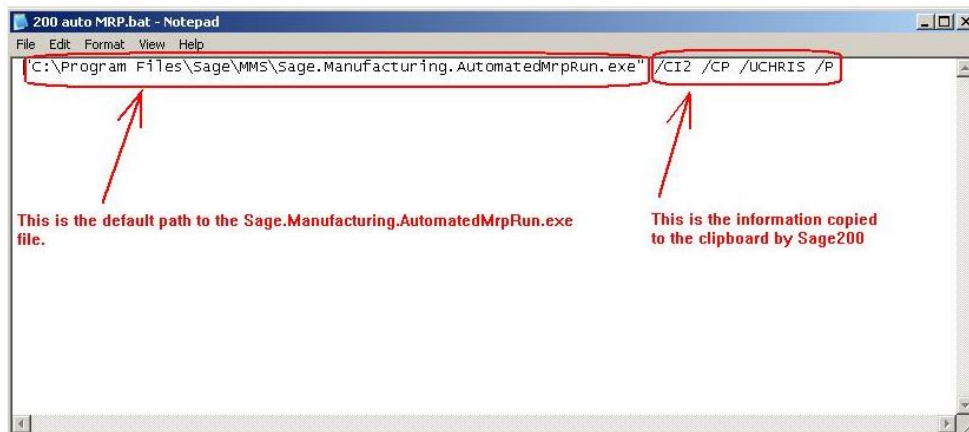
Click OK.



Click OK.

Create a new text document.

Give the document an appropriate name with the extension bat (i.e. AutoMRP.BAT)



In inverted commas enter the path to the Sage.Manufacturing.AutomatedMRPRun.exe file (by default this would be "C:\ProgramFiles\Sage\MMS\Sage.Manufacturing.AutomatedMRPRun.exe")

Leave a space and then paste the contents of the clipboard.

Then save the file and set up a Windows Scheduled Task to run the file at the desired time.