

The logo for CIM50, featuring the letters 'CIM' in white and '50' in blue, with a stylized blue circle around the '0'.

CIM50

v2020.2 Release Notes

Greater stability, more productivity

The latest release of Cim50, version 2020.2 has arrived. This version includes a host of bug fixes to make this release the most stable version of Cim50 yet.

This update is compatible with Sage 50cloud Accounts v26, v26.1, v26.2 and v26.3.

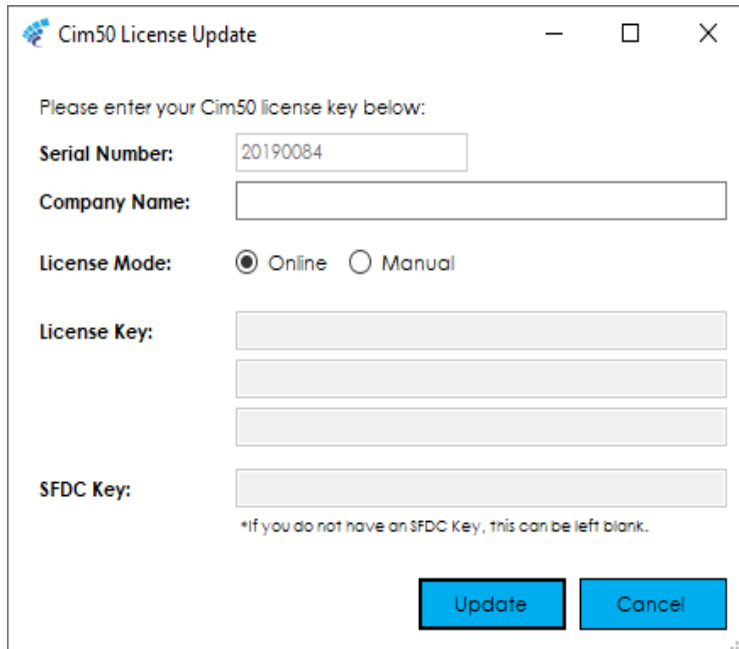
See the complete list of issues resolved in this update below...

Please read below for a full list of issues resolved...

Cim50 - New Features

Online Licensing

Cim50 has now switched over to an online licensing model. This means that applying upgrades, additional users or renewing your license happens automatically, without the need for you to input the key manually.



The screenshot shows a window titled "Cim50 License Update". It contains the following fields and controls:

- Text: "Please enter your Cim50 license key below:"
- Field: "Serial Number:" with the value "20190084" entered.
- Field: "Company Name:" (empty).
- Field: "License Mode:" with radio buttons for "Online" (selected) and "Manual".
- Field: "License Key:" (empty, consisting of three stacked input boxes).
- Field: "SFDC Key:" (empty).
- Text: "*If you do not have an SFDC Key, this can be left blank."
- Buttons: "Update" and "Cancel".

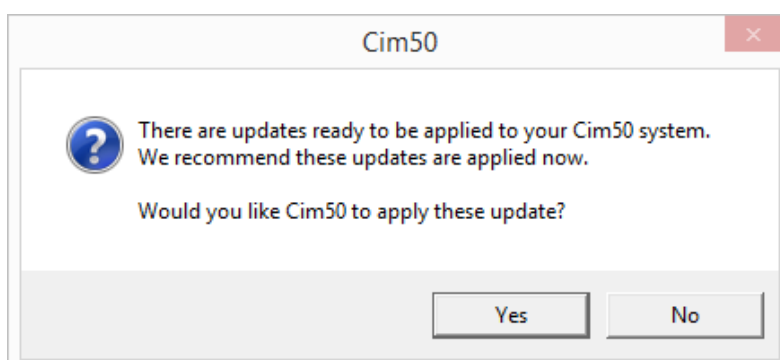
BP Notes: To facilitate the change to an online licensing model, we have updated our licensing server to link a serial number to a company. As such, before being able to login to Cim50, you will need to input the company name associated with the serial number exactly as per the email we send through to you.

To do this, open up the Cim50 Control Panel and click the 'Update License' button. You will be presented with the above screen. Input the company name, and press 'Update'. Cim50 will contact our licensing server and verify the serial number/company name and update the license accordingly.

If a customer orders an additional user or module, we will apply the changes to our licensing server, and this will be pushed out to the customers system within 1 hour (the system push happens on the hour each hour).

Automatic Updates

Cim50 will now download any hot fixes automatically. Users will then be prompted to install those updates when logging in.



The screenshot shows a dialog box titled "Cim50" with a question mark icon. The text inside reads:

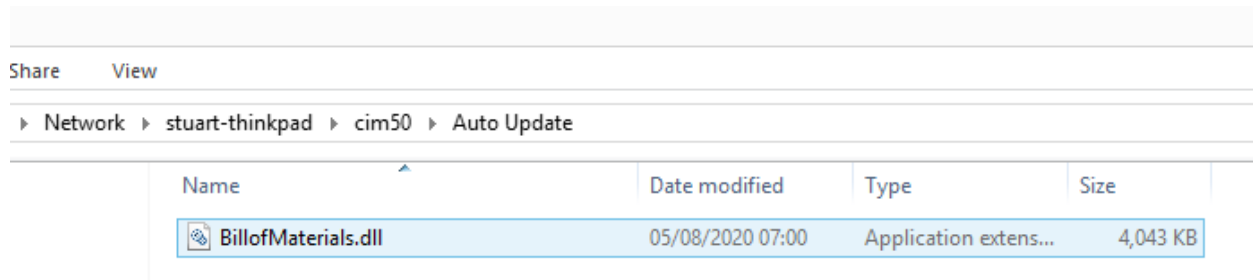
There are updates ready to be applied to your Cim50 system. We recommend these updates are applied now.

Would you like Cim50 to apply these update?

Buttons: "Yes" and "No".

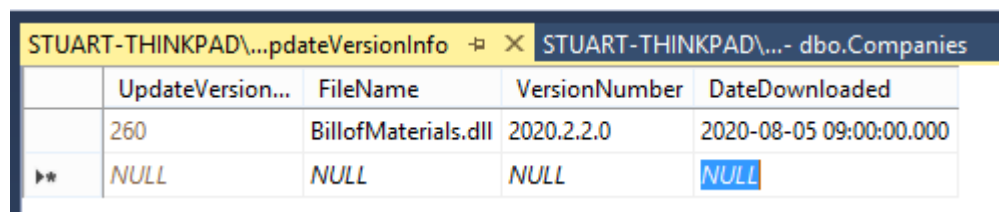
BP Notes:

Hotfixes are automatically downloaded within 1 hour of being released by CIM Software. Checks are carried out on the hour. They are downloaded to the 'Auto Update' folder within the Cim50 share.



Name	Date modified	Type	Size
BillofMaterials.dll	05/08/2020 07:00	Application extens...	4,043 KB

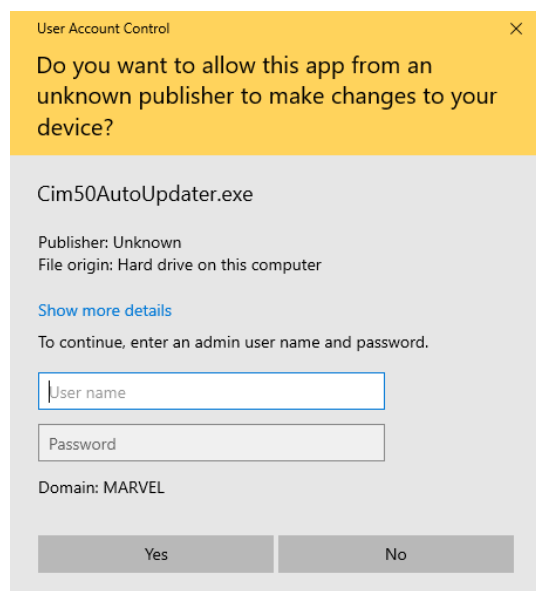
A record is also written to the 'UpdateVersionInfo' table in the Cim50 Admin database.



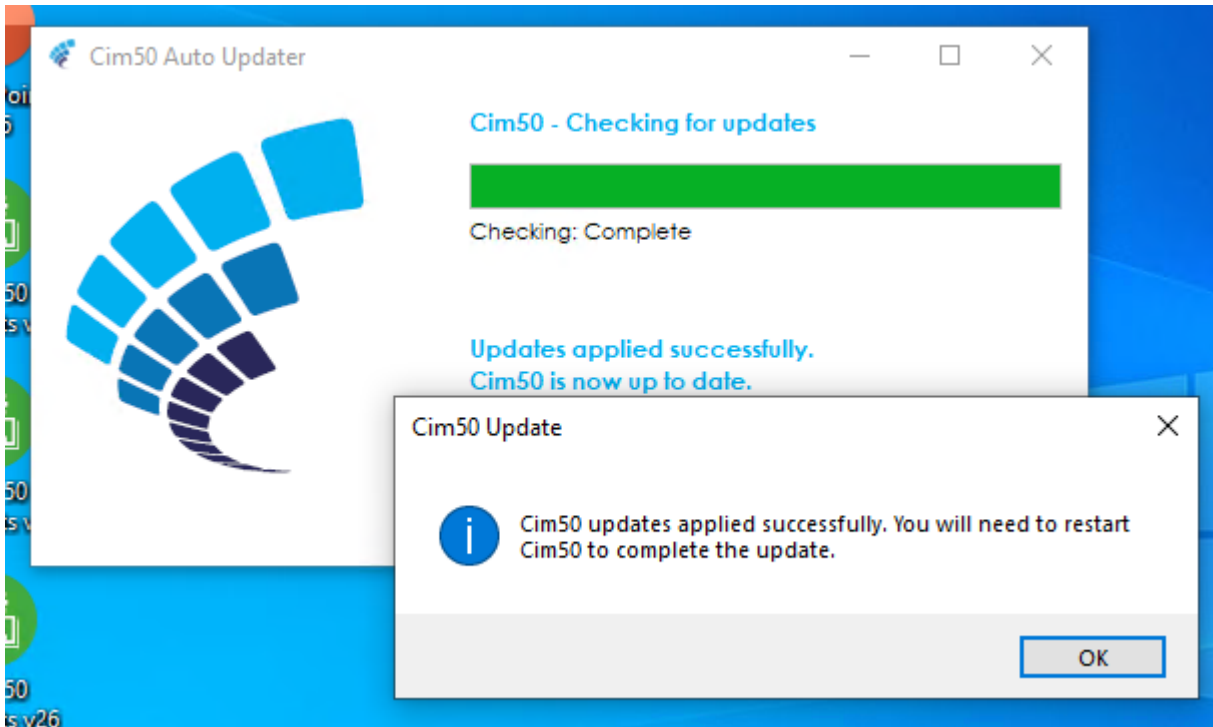
UpdateVersion...	FileName	VersionNumber	DateDownloaded
260	BillofMaterials.dll	2020.2.2.0	2020-08-05 09:00:00.000
NULL	NULL	NULL	NULL

When a user goes to login to Cim50 it compares the installed file version to the record referenced in the above table. If the installed version is earlier than the update, they will receive the prompt displayed in the top screenshot.

Pressing 'Yes' will launch the Cim50 Auto Update program, which will process and install the updates automatically. If the user does not have permission to install the files in the Cim50 install directory they will be prompted with a standard windows elevation screen, requesting the details of an administrator to be entered.



Once entered the update utility will load and process the updates. The user will then need to reopen Cim50.



Minor Changes

Cim50 v2020.2 also includes the following minor changes.

Module	Change Notes
Stock Control	Users can now setup multiple stock suppliers for the same supplier with different supplier part numbers.
Stock Control	We have changed the 'Amend Receipt' functionality to stop users from being able to amend a receipt for items that are still in quarantine.
Stock Control	Amended the list of illegal characters for stock fields, removing the open brackets "(" and close brackets symbols ")" from the list.

Bug Fixes

Cim50 v2020.2 also resolves the following bugs/issues reported.

Module	Change Notes
Bill of Materials	Resolved an issue where the Labour Overhead % recovery does not update when doing an import of BOMs.
Bill of Materials	Resolved an issue where the export to Excel option within BOM Explosion would display incorrect values in the Parent BOM column in certain circumstances.
Bill of Materials	Resolved an issue where an "Object variable" error would occur when defining batches during a BOM build if you clear the location field.
Bill of Materials	Resolved an issue where a user is unable to build BOM despite sufficient stock in certain circumstances.
Bill of Materials	Resolved an issue where a scrap percentage does not get taken into account when costing a BOM.
Bill of Materials	Resolved an issue where changing the qty per run on an operation on a BOMs sub assembly does not have the correct effect on the costing within the trial kitting.
Bill of Materials	Resolved an issue where an error would occur when raising a WO for a BOM with no components using the perform action function on the trial kitting screen.
Bill of Materials	Resolved an issue when copying a BOM, if you add a component, resequence to put it higher up in the list, then save, you receive an error.
Bill of Materials	Resolved an issue when a sub assembly BOM has a component which is marked as finished item (without a BOM) the top-level costing does not show this in the breakdown or the layouts. The totalled BOM costing does include the cost in the material cost however.
Bill of Materials	Resolved an issue where leading zeros on product codes are missing when exporting a BOM explosion to Excel.
CIMi	Resolved an issue where an "Out of Memory" error would occur during overnight check data runs.
CIMi	Resolved an issue where overnight checks and manual checks would return different results for Works Order Allocation checks in certain circumstances.
Delivery Notes	Resolved an issue where deleting an amended delivery note causes imbalance on traceable items in certain circumstances.
Delivery Notes	Resolved an issue where an incorrect discount value would pull through to an invoice when additional items are to existing delivery note, or if despatched via SFDC.
Delivery Notes	Resolved an issue where the delivery note item index would get miscalculated when sorting the item number column in delivery note when dispatching multiple orders for the same customer in certain circumstances.
Delivery Notes	Resolved an issue where Serial Number adjustment in transaction quantities are not being updated when amended on delivery notes.
Delivery Notes	Resolved an issue where Packing Details appear on View Delivery Note screen even though the setting is switched off.
Delivery Notes	Resolved an issue when entering the additional packing info on a delivery note, if you have an apostrophe in the "Packed In" field, an error is thrown.
Delivery Notes	Resolved an issue where updating multiple delivery notes to a single invoice would cause a VAT rounding error in certain circumstances.
Delivery Notes	Resolved an issue where an invoice would come through as outstanding for payment where the associated sales order is fully paid for when processed via Cim50.
Imports	Resolved an issue where importing new stock suppliers would fail in certain circumstances.
Imports	Resolved issues where importing BOM fields, specifically Manufacturing Instructions, or those with apostrophes, would not import correctly in certain circumstances.

Planning	Resolved an issue where an error would occur if the customer reference has an apostrophe in it when reading sales order demand into planning.
Planning	Resolved an issue where if the sub assembly tagging mode is set to SO and you hard link a sub assembly to a parent works order, MRP will request you create a new sub assembly works order to cover demand, as it doesn't recognise it will satisfy the existing demand.
Planning	Resolved an issue where if you are importing a Sales Forecast and have added items to the XLS that are marked as inactive, the file validates ok but when going to import you receive an error.
Planning	Resolved an error that occurs when entering a component stock code into a make for stock demand.
Planning	Resolved an issue where when running MRP for a specific sales order, the sales order search screen does not sort due dates correctly if the user clicks on the column header sort.
Planning	Resolved an issue where on occasion the scheduled planning will not be able to populate the PlanningMRPDemand or PlanningMRPRecommendation tables. These errors do not show in the program, only in event viewer.
Quotations	Resolved an issue where BOM colours are not seen until you tab through the stock code field when in the configure screen of a product item on a quote.
Quotations	Resolved an issue where incorrect prices get pulled through to quotes when using price lists in Sage if the customer account reference was typed in lower case.
Quotations	Resolved an issue where an error would occur if you add an item to a quote configuration which has an apostrophe in the unit of measure field.
Stock Control	Resolved an issue where Cim50 would allow a user to delete an item that is used as a component on a BOM defined in Sage 50cloud accounts. Doing so would cause a check data error in Sage.
Stock Control	Resolved an issue where a stock item image was not being saved on change in Cim50
Stock Control	Resolved an issue when loading the stock profile screen, if you cancel out whilst the loading bar is visible you will receive an error.
Stock Control	Resolved an issue where users can change the traceability status of an item via 'Batch Changes' screen when an item still has stock.
Stock Control	Resolved an issue where if your stock settings are defined to make an item traceable by default, when creating a non-stock item, that it keeps the traceable tag in the background but greys out the ability to turn off the traceability.
Stock Control	Resolved an issue where Unit of Measure conversion appears to reverse the calculations when Adjusting and Transferring Traceable stock.
Stock Control	Resolved an issue when setting up analysis codes and you change your mind before saving the screen, when you remove the name and click back to the type and entry method fields you get an Object reference not set to an instance of an object error.
SFDC	Resolved an issue where using the auto log out at end of each day function in CIM50 SFDC, no postings are made to either pending or wo operation bookings in certain circumstances.
Works Orders	Resolved an issue when changing qtys on a linked works order to a higher required qty, it then will allow you to link the full amount to the SO, rather than the extra amount added.
Works Orders	Resolved an issue when raising a works order via trial kitting can cause an error relating to works order costing in certain circumstances.
Works Orders	Resolved an issue where allocating and issuing traceable stock on a FIFO basis where multiple batches are allocated and subsequently issued causes the system to incorrectly calculate the quantity available, causing a traceable balance issue.
Works Orders	Resolved an issue where a sub-assembly stock item could be allocated to a sales order for the parent item when completing a works order in certain circumstances

Works Orders	Resolved an issue where a user can add a component line to a Works Order for a non-existent item. The component line is added using the item code as per the component line above.
Works Orders	Resolved an issue where the WO Audit log would not update when using Replacement Component function from Tools - Works Order menu